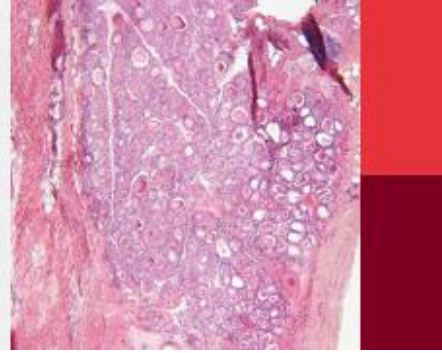


Endocrine Disruptors Affecting the Human and Companion Animal Endocrine Functions. Similarities and Indicators in ONE Health Concept



Editor's call for papers: "Endocrine Disruptors Affecting the Human and Companion Animal Endocrine Functions – Similarities and Indicators in ONE Health Concept"

Manuscript submission is now open for a new article collection I am co-editing on "Endocrine Disruptors Affecting the Human and Companion Animal Endocrine Functions – Similarities and Indicators in ONE Health Concept". On behalf of the editorial team, we would like to include a paper from you in this collection - we would welcome original research, reviews/mini reviews, and other article types listed on the following page:

<https://www.frontiersin.org/journals/endocrinology/sections/experimental-endocrinology#article-types>

The aim of the collection is to bring together the latest quality articles focusing on, but not limited to:

- Effects of environmental pollution on metabolism
- Endocrinopathies in connection to food preservatives
- Appearance of endocrine disruptors at different points of metabolism
- Incidence of endocrinopathies and/or metabolic syndromes at population level
- Alteration of reproduction impaired by environmental pollution

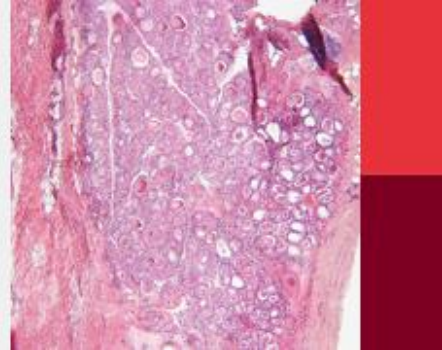
All research will be published Open Access. We additionally aim to put together a free eBook of all published manuscripts to provide an up-to-date and comprehensive overview of the latest research developments in the field.

You can learn more about the collection here: <https://www.frontiersin.org/research-topics/39385/endocrine-disruptors-affecting-the-human-and-companion-animal-endocrine-functions---similarities-and>

Whilst not mandatory, if you would like feedback on a manuscript's suitability, I encourage you to submit an abstract (or short outline of the manuscript) by July 25th. The deadline for manuscript submissions is September 23th, but we can accommodate extensions on a case-by-case basis.

This is in collaboration with Frontiers in Endocrinology (IF 5.555, CiteScore 5.1).

Endocrine Disruptors Affecting the Human and Companion Animal Endocrine Functions. Similarities and Indicators in ONE Health Concept



Please note that publishing fees are applied to accepted articles, but the team at Frontiers is happy to advise you in this regard. You can reach out to our dedicated point of contact at Frontiers, Toby Heseltine, at endocrinology.submissions@frontiersin.org if you have any questions.

If you are interested, please register via the link below. You will also shortly receive a follow-up email with further details. If you do not wish to participate but know someone who might, please feel free to forward this on to them.

On behalf of the editorial team: Habil. Julianna Thuróczy DVM, PhD, Dipl. ECAR, Bodil Ström Holst DVM, PhD, Dipl. ECAR, and Priv. Doz. Habil. Tamás Röszer PhD